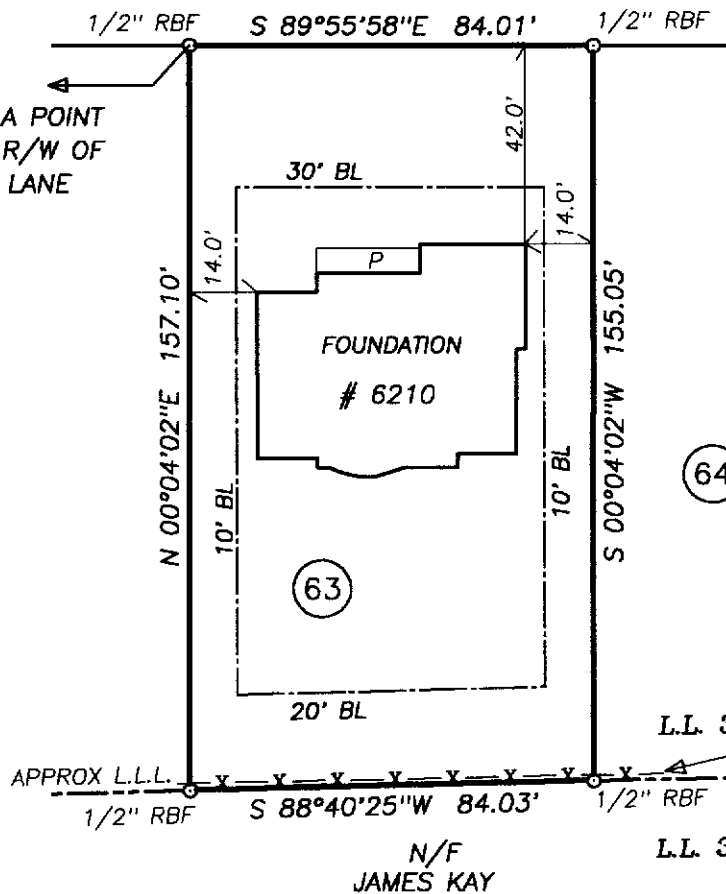


# STURBRIDGE LANE - 50' R/W



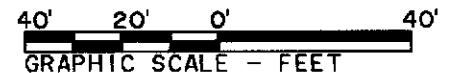
647.47' TO A POINT  
ON THE 50' R/W OF  
WESTCROFT LANE

(62)



## LEGEND

RBS/F	REBAR SET/FOUND	DI	DROP INLET
OTPF	OPEN TOP PIPE FND	P	PORCH
R-W	RIGHT-OF-WAY	CONC	CONCRETE
BL	BUILDING LINE	DK	DECK
SSE	SANITARY SEWER ESMT	PAT	PATIO
DE	DRAINAGE EASEMENT	S	STOOP
UE	UTILITY EASEMENT	-X-	FENCE



AREA: 13,111 SF - 0.301 AC  
PLAT BOOK 75, PAGES 255-262

DIMENSIONS FROM HOUSE TO PROPERTY LINES  
SHOULD NOT BE USED TO ESTABLISH FENCES.

2004070392 JWIEL (MATT)

**CARTER LAND SURVEYORS  
AND PLANNERS**  
2780 Peachtree Industrial Blvd.  
Duluth, Georgia 30097  
770-495-9793

THIS PLAT IS FOR EXCLUSIVE USE BY CLIENT.  
USE BY THIRD PARTIES IS AT THEIR OWN RISK.

Equipment Used: Topcon APL Robotic Station

The field data upon which this plat is based  
has a closure precision of one foot in +10,000  
feet and an angular error of less than seven  
seconds per angle point and was adjusted  
using the Compass Rule. This plat has been  
calculated for closure and is found to be  
accurate within one foot in +10,000 feet.

SURVEY FOR: **JOHN WIELAND HOMES**

SUBDIVISION: CREEKSIDE

LOT: 63 BLOCK: UNIT: 5 PHASE: 1B

LAND LOT: 307

DISTRICT: 2ND

SECTION: 1ST

COUNTY: FORSYTH

GEORGIA

SCALE: 1" = 40'

FIELD WORK DATE: 7/12/2004

In my opinion, this plat is a correct representation  
of the land platted and has been prepared within  
the minimum standards and requirements of law.

